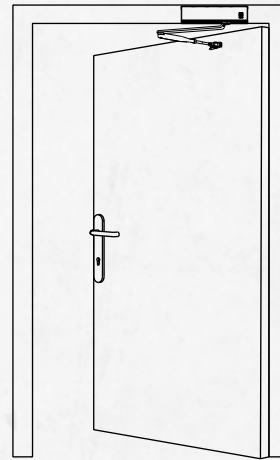


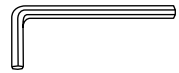
Left adjustment



Right adjustment

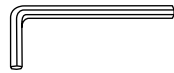
**NB!** Door closers arrive unadjusted. Adjustment after installation works is responsibility of installers.

### Adjustment tools:



2.5

2.5 mm hexagon



5

5 mm hexagon



10 mm wrench

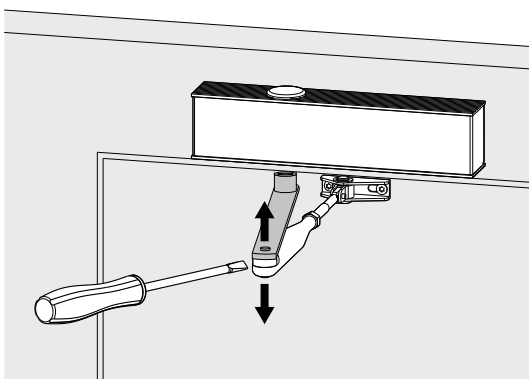


Screwdriver

**Step 1** Before adjusting, fit an arm to the door closer, if it was delivered disconnected.

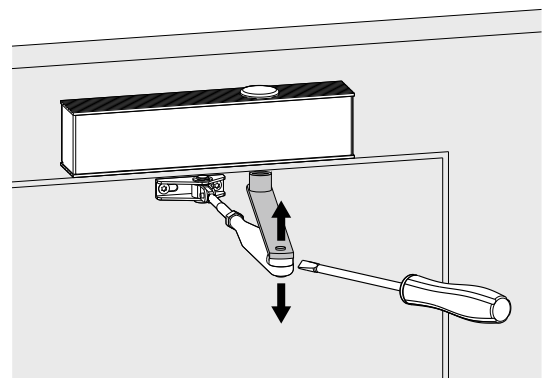
### Left adjustment

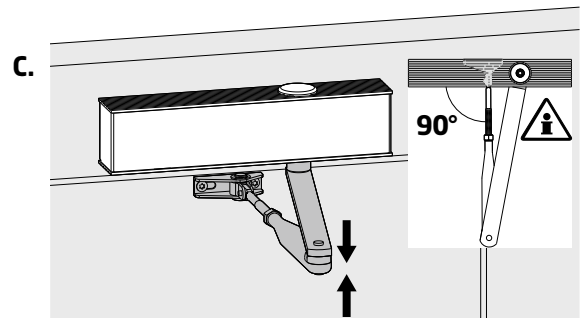
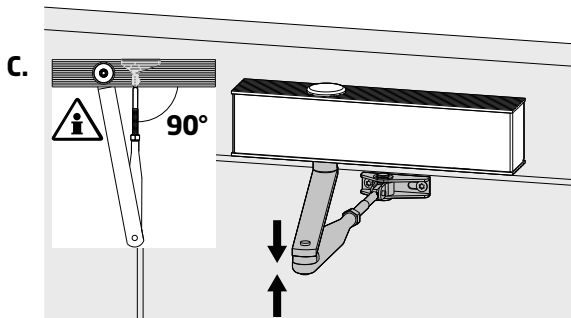
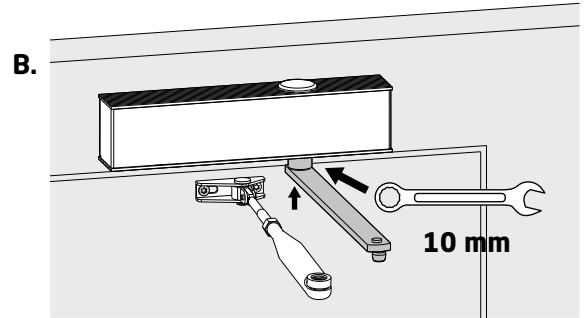
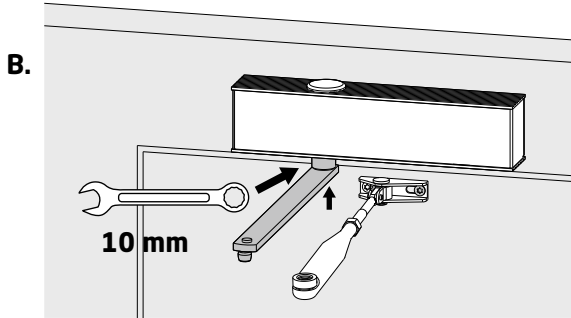
A.



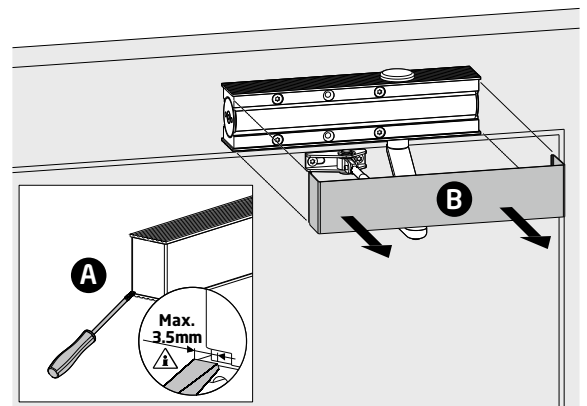
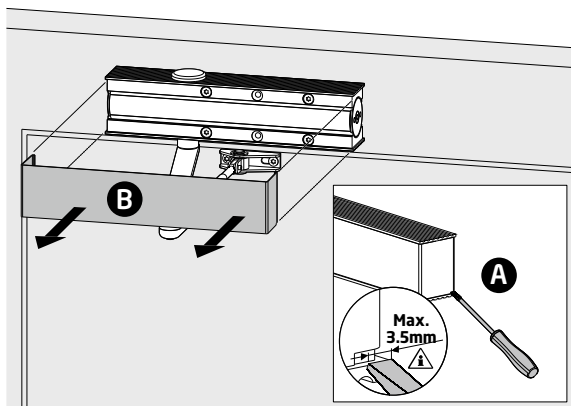
### Right adjustment

A.

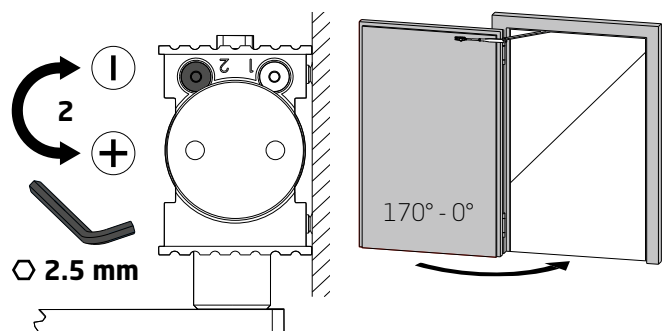
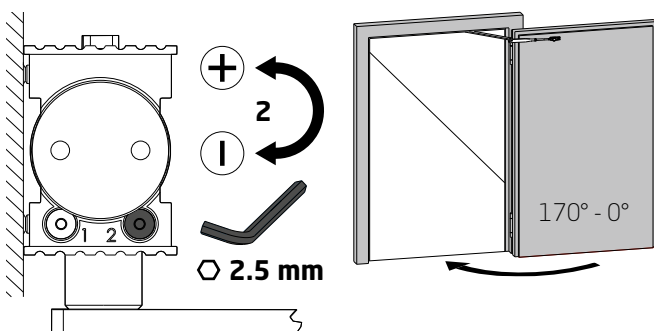




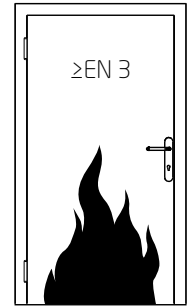
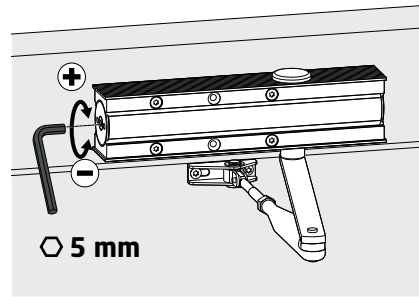
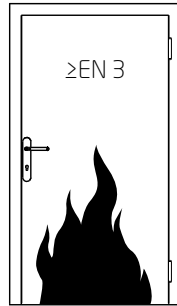
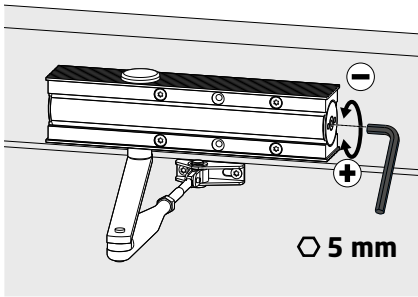
## Step 2

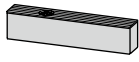


## Step 3 Closing speed

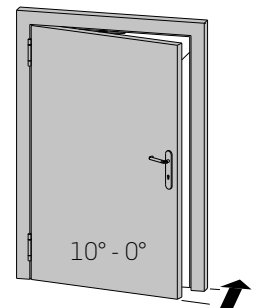
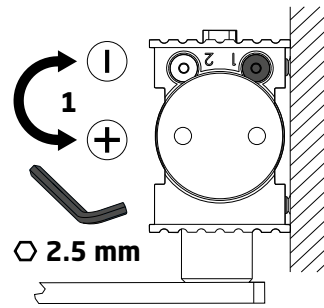
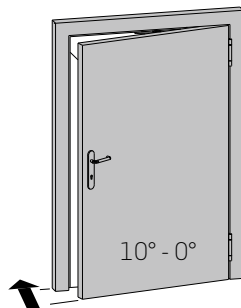
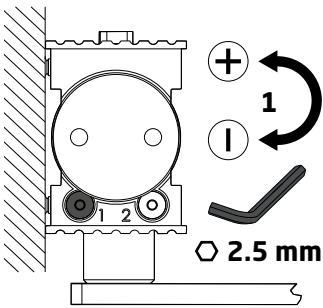


### Step 4 Closing force



	Closing force	Max. door width	Rotations quantity for adjustment
 <b>DCS500</b> EN 2-6	2	850 mm	-3
	3	950 mm	0
	4	1100 mm	+3
	5	1250 mm	+7
	6	1400 mm	+11

### Step 5 Latching speed



### Step 6

