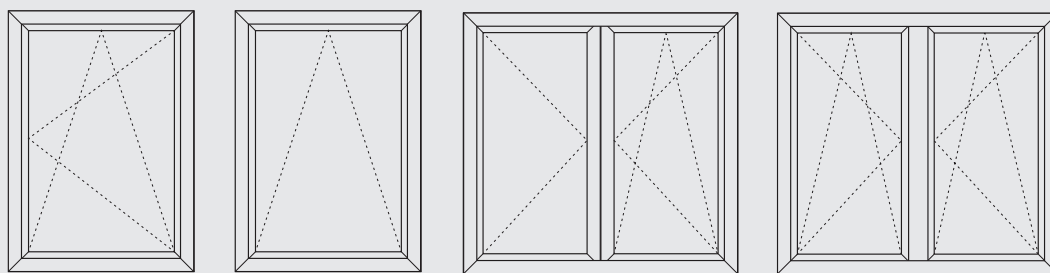


Sash removal

Inside opening window with hidden hinges

Sapa 1086

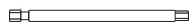


Window with hidden hinges sash removal

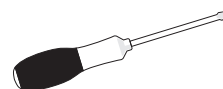
Tools needed:



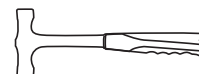
**Cordless
screwdriver**



2.5
2.5 mm hexagon



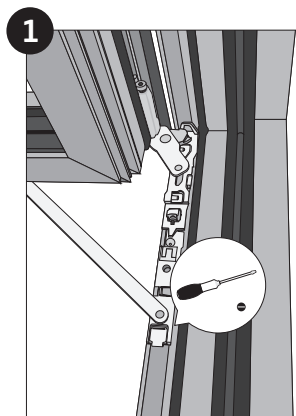
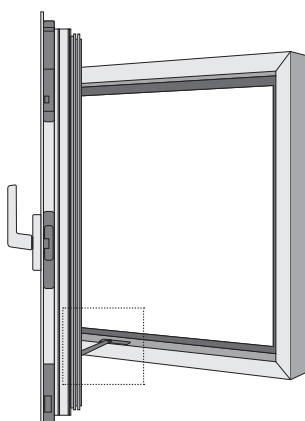
Screw driver



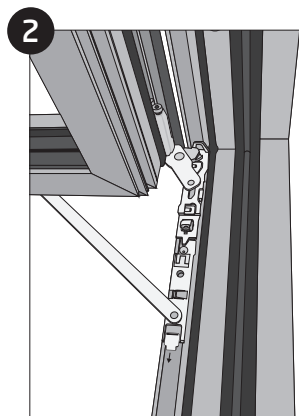
Light hammer

Step 1.1 Open the sash for removing opening restrictor.

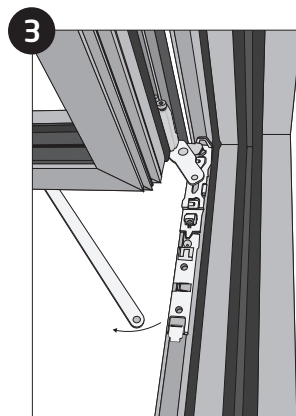
(P.s. Opening restrictor is not a must thing. It depends on a window furniture list. In some cases it might not be included.)



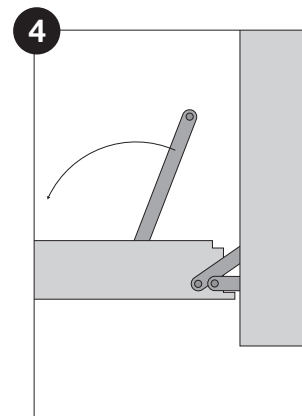
Release fixator of the holder with the help of screwdriver. Just fit screwdriver into the gap



Slide the restrictor to the side

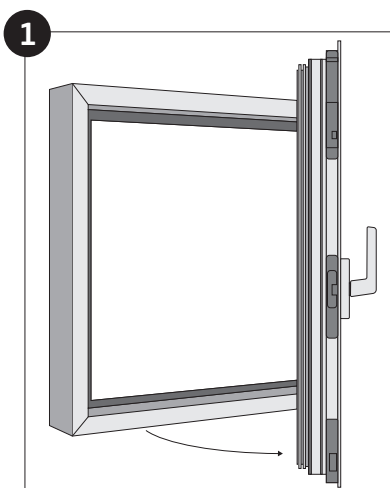
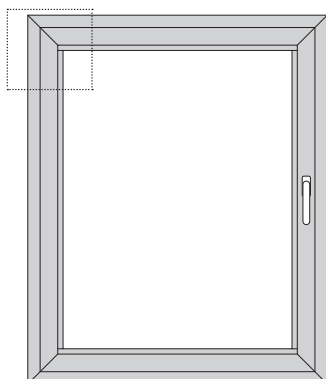


Lift up the restrictor from the holder.

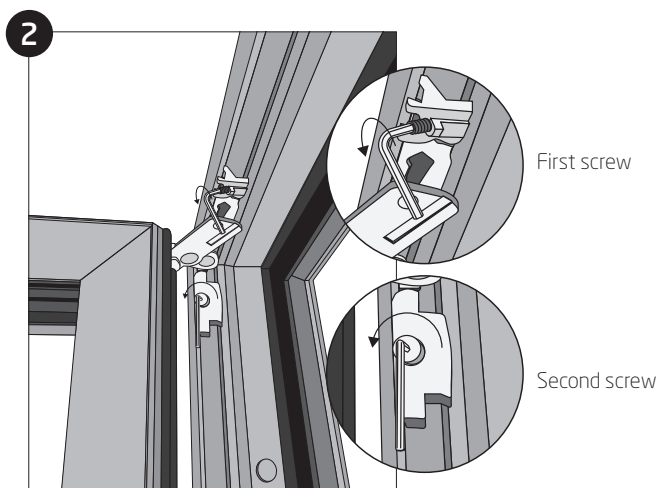


Turn released restrictor under the sash to avoid breaking

Step 1.2 Release the upper hinge of the sash.



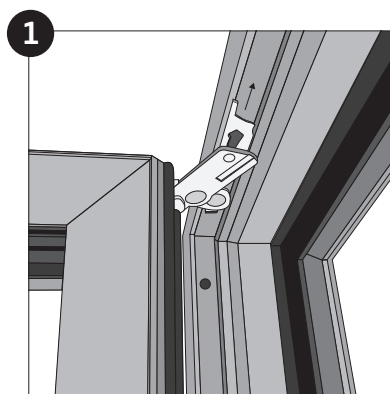
Open the sash in 90 degrees and support it.



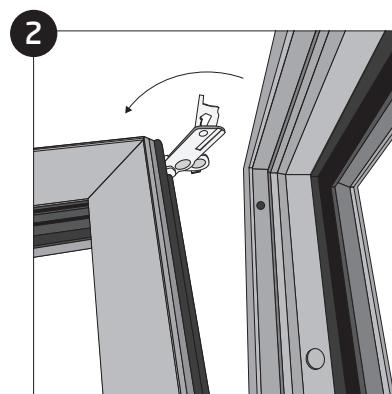
Release the screws of top hinge holding the sash (turn anticlockwise) with the help of 2.5 mm hexagonal screwdriver bit.

NB! Support the sash during the hole process.

Step 1.3 Take the sash out of the top hinge.



Push sash to the opposite side from the frame



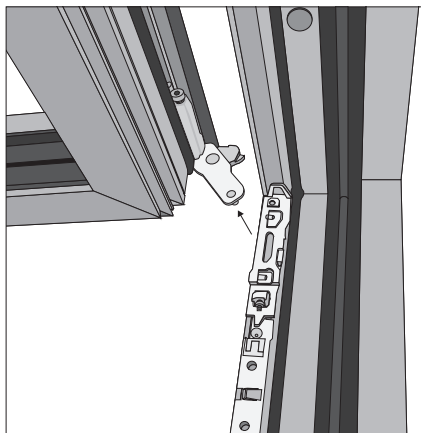
Tilt sash to yourself to release upper scissor.

Sash removal

Inside opening window with hidden hinges

Sapa 1086

Step 1.4 Lift up the sash from bottom hinge.

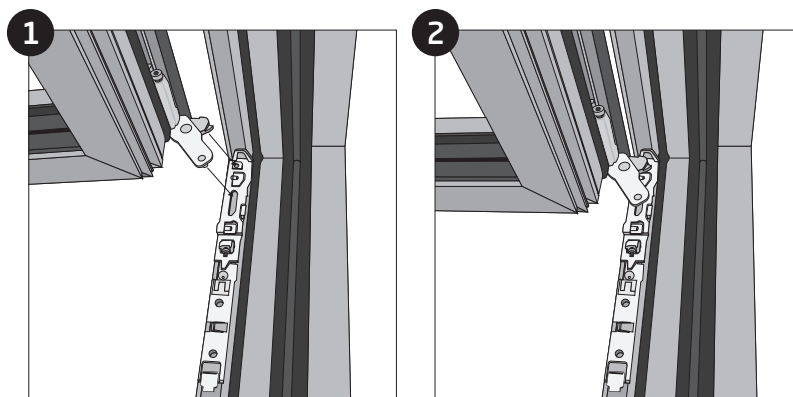


Lift the sash up in order to take it out from the bottom hinge.

Step 1.5 After removing the sash, place it safely (vertical support recommended).

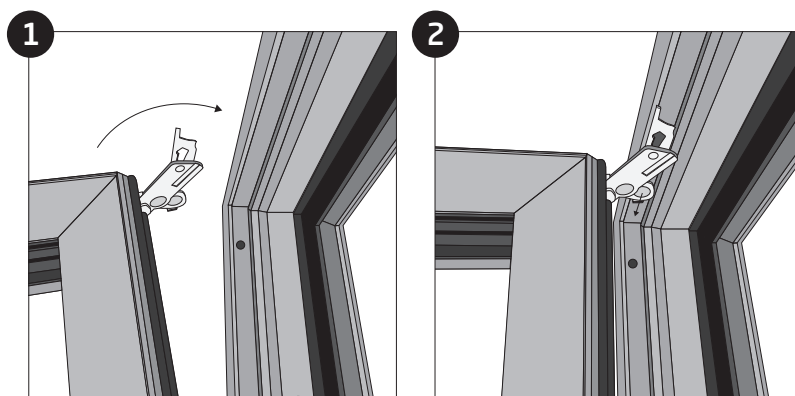
Window with invisible hinges sash installation back to the frame

Step 2.1 Fix the sash in to the frame.



Fit the sash in to the bottom hinge

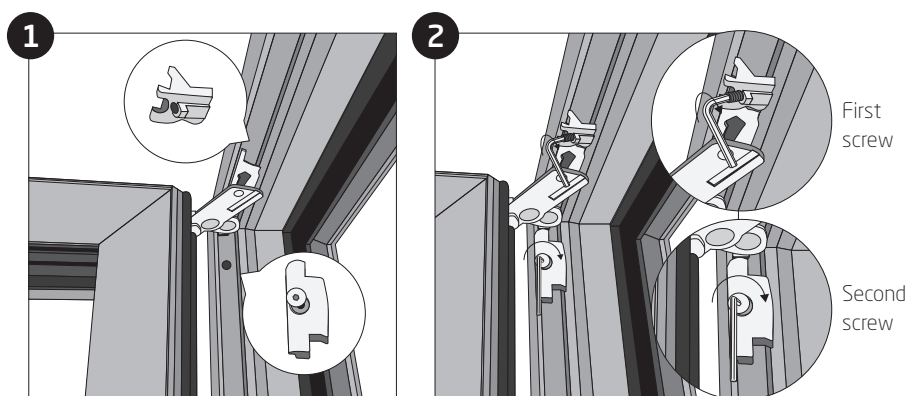
Step 2.2 Fit the upper hinge of the sash to the frame.



Insert scissor to the frame groove

Push sash and scissor towards to the frame

Step 2.3 Fix the upper hinge of the sash.



Refit additional fittings

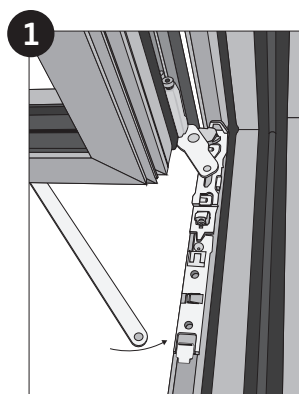
Fasten the screws of top hinge holding the sash (turn clockwise) with the help of hexagonal screwdriver bit.

Sash removal

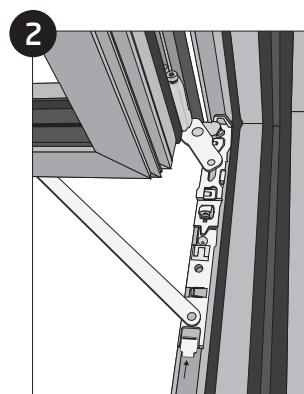
Inside opening window with hidden hinges

Sapa 1086

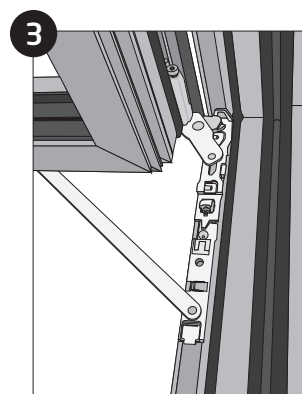
Step 2.4 Fasten the opening restrictor back to the frame.



Turn restrictor out of the sash and fit it back to the holder on the frame.



Fit restrictor back in to the holder and push fixator back to place.



The sash is now fitted

Step 2.5 Close the sash, check if it is functioning properly. Adjust if needed.